

The Versatile Switches from C&K



New in Our Portfolio.



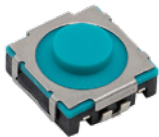
Authorised Distributor.

- The versatile C&K switches are used, inter alia, in industry, in vehicles and aircraft, in medical equipment for minimally invasive procedures, in servers, telephone systems, in consumer goods and in payment systems such as card readers
- Various types of switches such as pushbuttons, slide switches, rotary switches, toggle switches and rocker switches
- Compliance with ISO standards 9001, 14001, 50001, IATF 16949 and certificates issued by the aerospace industry
- Use in protected areas



Our Portfolio - Proven Quality.

The Switches from C&K



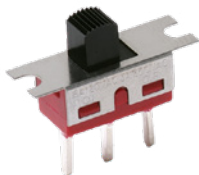
C&K offers a wide range of **mini tactile switches** designed for the most demanding applications.

The **pushbutton** switch range for surface mount and panel mounting includes push and latching versions.



The **keyswitches** are designed for use in demanding environments.

The **snap switches** come in a variety of actuator configurations, electrical ratings from low levels up to 30 A, and a broad range of operating forces.



The **slide switches** are suitable for PCB, surface mount and panel mounting. They feature positive latching, sealing and shorting or non-shorting contacts.

Surface mount **DIP switches** have a variety of actuation styles and are available in surface mount, through-hole, right angle and vertical mount options.



With 19 different series of **detect switches**, C&K offers a wide range of SMT, through-hole, panel and snap-in with case and screw mount versions.

The **navigation switches** are miniaturised, compact and multi-directional products and feature an adjustable 4-way directional switch designed for mirror control, for example.



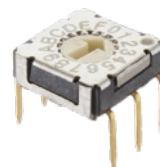
The wide range of **toggle switches** includes low voltage miniature, sub-miniature and ultra-miniature models, up to high power 10A versions.

The **rocker switches** are available in illuminated and sealed/waterproof versions. They are suitable for surface mounting and panel mounting.



Available in plastic or metal enclosures, the **switchlocks** support a variety of safety requirements.

Rotary switches are available for applications from 10 mA to 12 A. With multi-pole, half-inch, rota-slide, power rota-slide and subminiature variants, the switches offer shorting and non-shorting contacts.



Examples of use:

- Airbags
- Cabin lights
- Cashier/payment systems
- Cockpits
- Computers
- Control panels
- Doors
- Garage door openers
- Heating technology
- Household appliances
- Keyboards
- Lifts
- Measuring instruments
- Medical devices
- Mobile phones
- Motorbikes
- Office equipment
- Power supply
- Remote controls
- Security systems
- Sensors
- Telephone/network
- Thermostats
- Timers
- Utility vehicles
- Vehicle technology
- Volume control

www.boersig.com

