

SUPERSEAL PRO 2 POSITION SEALED CONNECTORS

FOR INLINE APPLICATIONS

Over the years, a shifting dependency towards the electrification of commercial vehicles has amplified the market for sealed inline connectors. So to serve this changing industry, we have responded with the launch of a new generation of sealed connector – the SUPERSEAL pro 2P connector for inline applications. This new wire-to-wire and wire-to-device option provides a high value solution for lower vibration chassis applications, whilst delivering a cost effective option. Lightweight and highly reliable, the SUPERSEAL pro 2P offers a practical design which creates an efficient and easy to use solution.



A SEALED INLINE CONNECTOR WITH HIGH VALUE

The benefits of this new design are as follows:

- Design with proven MCON 1.2 SWS terminals that offer a 17A current carrying capacity and provide vibration resistance in compliance with USCAR† V2
- Achieve sealing levels of IP67/IP68/IP6K9K (with back shell) with enhanced seal retention features
- Improve flammability rating with UL 94 V0 PBT material
- Improve terminal retention and ensure proper position with standard Terminal Position Assurance (TPA)
- Ease assembly with pre-assembled, color-coded TPA options
- Offer cost effective, sealed in-line solutions

†USCAR is a trademark.

TARGET MARKETS



Bus



Light Duty Truck



Heavy Duty Truck



Industrial



Appliances



2-Wheeler

APPLICATIONS



Wire-2-Wire



Sensors



Lights



Gauges



Actuators

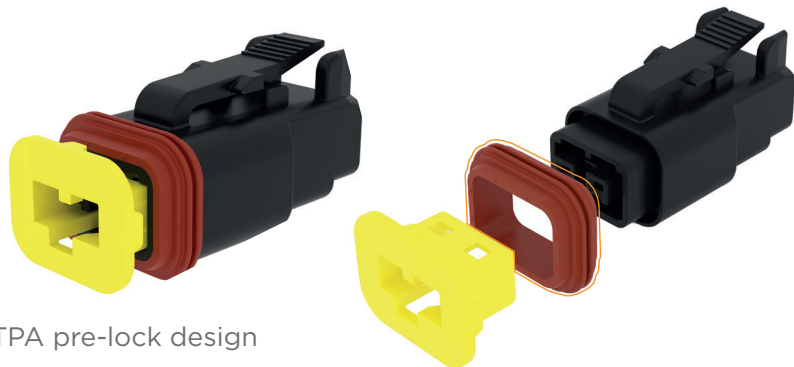


Switches



Solenoids

FEATURES



- TPA pre-lock design
- Enhanced front seal design
- Color and key coding feature on TPA

CODING A



CODING B

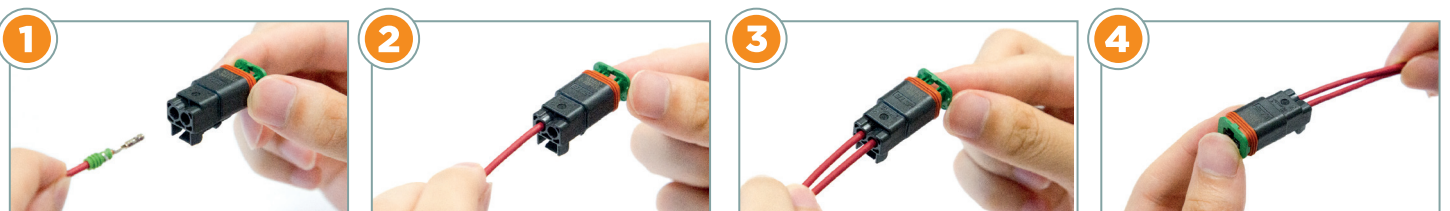


CODING C

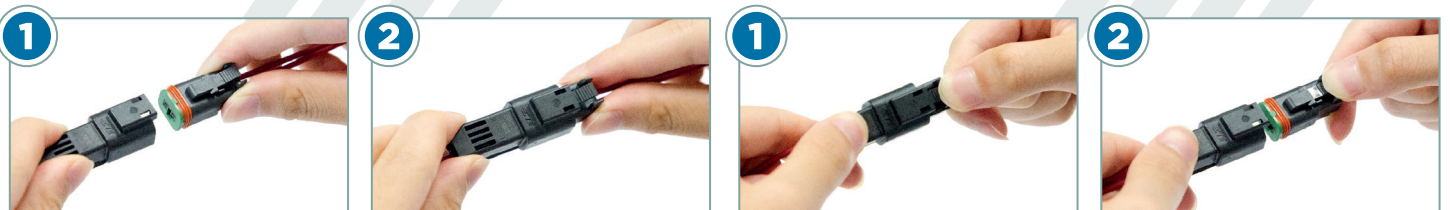


EASY TO USE

CONTACT INSERTION



MATING



UNMATING



CONTACT REMOVAL



*Refer to TE Application Specification 114-32258 for details.

LEARN MORE
ON TE.COM

